



NEWSLETTER

FRIDAY 26TH APRIL 2024

Dartmoor
Multi Academy
Trust

...everyone in our Trust.

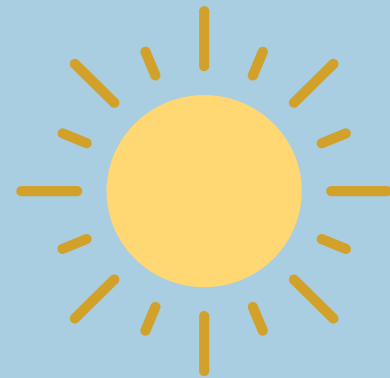


Dear North Tawton Families and Friends,

I hope this newsletter finds you well. We have had a wonderful start to the Summer term, and how lovely to finally have some sunshine! We have lots in store for the summer including class trips, sports day and our end of year production.

FONTSFEST

FONTS (Friends of North Tawton) have been working hard to plan an exciting new version of our traditional Summer Fair. Please put **Saturday 29th June** in your diaries now as you will not want to miss it!



Tin Can Collection

Mike Clark is continuing the tin can collection. Please bring along your cola, soda / pop, beer and cocktail cans to school on Thursday mornings where he will be at the gate. The cans will be recycled, and the money obtained will be given to the charity Families in Greif, a very worthy cause.

Bags 2 School

There will be a collection on Wednesday 15 May at the Rugby Club. Please bag up any clothes, shoes, handbags, bed clothes or towels you are happy to donate.

Bag2School is not a charity organisation. It is a business, which specialises in collecting and buying quality second-hand clothes in their original condition, which are then sold to wholesalers in emerging nations. They buy the donations from us and the money goes to our school funds via FONTS.



DONATION FOR FONTS

COLLECTION DATE:
WEDNESDAY 15 MAY 2024



DONATION DROP OFF POINT: NORTH TAWTON RUGBY CLUB

SATURDAY 29 JUNE



North Tawton PRIMARY SCHOOL

FEATURING

11AM - 5PM

CIRCUS WORKSHOP ★ FIREBLOCKERS

BIRDS OF PREY ★ BAR BY LONDON INN

ZUMBA SESSION WITH KATIE ★ FOOD STALLS

FREE GAMES CRAFTS ★ RAFFLE

TICKETS

£15 GROUP 4 PEOPLE ★ £5 SINGLE

FOR MORE INFORMATION friendsofnorthtawton@gmail.com





Each week we monitor attendance and follow up absences with calls, meetings and letters. We are calculating attendance across the school houses and House Captains announce the percentages in Friday assembly.

Last week Dart won with an impressive 98%, this week and joint first place for Creedy and Taw with 95%.

	Week beginning 15.4.24	Week beginning 22.4.24
Creedy	93%	95%
Dart	98%	92%
Taw	95%	95%
Okement	94%	93%

The Importance of Good Attendance

As a parent or carer, you always want the absolute best for your children growing up. Having a good education is a great head start in life and crucial in creating more opportunities in adult life.

Did you know that:

- child who is absent a day of school per week misses an equivalent of two years of their school life.
- 90% of young people with attendance rates below 85% fail to achieve five or more good grades of GCSE and around one third achieve no GCSEs at all.
- poor examination results limit young people's options.
- poor attendance suggests to colleges and employers that these students are unreliable.
- poor school attendance can lead to potential involvement in crime - a quarter of school age offenders have truanted repeatedly.
- In the UK 7.5 million school days are missed each year through unauthorised absence.

Labelling clothes

This is the time of year that children go out to play with coats and jumpers and then take them off and leave them all over the playground and field! (We do encourage them to hang them on the fence by the trip trail!) Please can you make sure coats and jumpers are labelled! Wellies, plimsoles and PE kits too. While we will always support children to find their lost property, we really don't have the time to time to investigate which items belong to whom after each PE lesson and each playtime!



Statutory Testing

This term we have our Y1 phonics screening, Y2 and Year 6 standard assessment tests (SATS) and the times table test for Y4. These tests will take place in school with as much preparation, but as little stress as possible!

We do ask that you support us, as always, with homework. Learning times tables in particular is something you can easily support with at home with games and apps. As always daily reading and positive attitudes towards problem solving and study will always help you child throughout their primary education and help set them up to have good learning attitudes, independence and self-discipline. Reading every day is the most important support you can give at home. Sharing books, talking about book characters and plots as well as listening to your child read is so valuable.

PLEASE CLICK ON OUR LATEST CLASS BLOGS:

[Sycamore Class](#)

[Hazel Class](#)

[Ash Class](#)

[Willow Class](#)

[Beech Class](#)

[Chestnut Class](#)

[Oak Class](#)

[Acorn Class](#)





Thank you to Gary for donating these beautiful statues to our Memorial Garden.

UPCOMING DATES FOR YOU DIARY

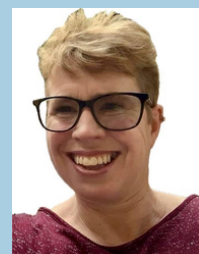
Thursday 16th May	Y1 and Y5 Zoo Trip
27th - 31st May	Half Term
Monday 3rd June	Y6 Normandy Residential
Saturday 29th June	FontsFest - Summer Event
Tuesday 2nd July	Sports Day
Wednesday 10th July	6pm KS2 Performance
Thursday 11th July	2pm KS2 Performance
Friday 19th July	Morning Leavers Assembly

Wishing all of our friends and families a positive week ahead

With best wishes

Tara Penny

Principal



GROUP SESSIONS

Okehampton & District Tennis Club



WHERE ?	<u>OKEHAMPTON TENNIS COURTS</u>	
WHEN?	<i>Saturday Mornings</i>	
TIME?	<i>9.00 - 10.00 am.</i>	<i>10.00 - 11.00 am</i>
WHAT AGE?	<i>6 - 10 Years old</i>	<i>11 - 15 Years old</i>
COST?	<i>£30 for 6 week course</i>	
TO BOOK AND PAY.	<i>Telephone 07973 287594 or Email lisavhutchins@gmail.com</i>	

*Course run by Okehampton & District Tennis Club
With Lisa Hutchins*
